



St. Michael the Archangel Parish

A LETTER FROM OUR PASTOR

PARISH CENTER

BUILDING *On Our* FOUNDATION *for the* FUTURE

My Brothers and Sisters in Christ:

Almost 180 years ago, two priests came to evangelize the people of Kailua-Kona. It was through this mission that the original St. Michael the Archangel Catholic Church was built, and with that, a vibrant Catholic community was formed.

Today, nearly two centuries after the founding of our mission church, St. Michael's Parish continues to serve the Greater Kailua-Kona area through our various missions.

In my time as your pastor, I have witnessed firsthand Christ at work in our parish community as He has guided us in the building of our rich history. I am blessed and privileged to be a part of all that is happening here at St. Michael's, and I am deeply grateful



to those individuals and families who helped build this church that we enjoy today, and who have established the foundation of what we hope to pass on to future generations.

As you well know, the St. Michael's community has persevered through the devastating

loss of our former church building. But the generosity that God poured into the hearts of our parish family is what has enabled us to persevere. The charity you have shown — both in service to our community and in gifts to our parish — has truly been an inspiration. From the depths of our hardships, we have emerged a stronger faith community. And, today, we have a beautiful church building

In this Issue

- 3 Our Parish Center Building *On Our Foundation for the Future*
- 6 Recognizing Our Living Stewards
- 7 The Anti-Human Trafficking Ministry: *Working to End Modern-Day Enslavement*

75-5769 Ali'i Drive,
Kailua-Kona, HI 96740
(808) 326-7771
stmichaelparishkona.org

PEPELUALI/FEBRUARY
2021

continued on page 2

A LETTER FROM OUR PASTOR

PARISH CENTER

continued from front cover

that allows us to worship our Lord. I cannot thank you enough for what you did during this difficult time.

Now, we are called to build upon the foundation we established when we built this church. After months of prayer, study, and consideration, we are moving ahead with the building of our Parish Center. Long before I became your pastor, this had been the dream of our parish.

Now, it is my responsibility to ensure we bring this dream to fruition.

The calling for a new Parish Center has been something this faith community has wanted and needed for a long time. By moving forward with this project, we are building on the spiritual foundation that was laid 180 years ago, and that has grown exponentially over the years.

Following in the footsteps of our parish founders, it is now our turn to pick up the baton and run our leg of the race. By doing so, we will

strengthen the community around us and further solidify the foundation for the next generations of Catholics in Kailua-Kona.

The benefits this final addition to our campus will bring to our parish community cannot be quantified. By building a new Parish Center, we will enhance the faith life of our parish family today and for generations to come. It will be a space for our current ministries to meet, a space where new ministries will form, a space for staff members to thrive, and a space for our community to connect and grow.

With the theme, *Building On Our Foundation for the Future - E ho'okumu kākou i ke kāhua no kēia mua aku*, we are launching an ambitious \$5.1 million campaign that will allow us to bring our parish campus to completion. The information in this newsletter explains the exciting details of this project. I understand this campaign is a serious and important challenge. All

of us must pray for the success of this campaign, lend our many God-given talents to its completion, and make financial sacrifices to make it happen. As we work in union with Christ, we will build a place for our community to flourish.

Thank you for all you have done to make St. Michael the Archangel Catholic Church such an incredible parish community, as well as for your generosity in this endeavor. This Parish Center will build on our past, support our community, and secure our future generations.

With God as our help, I am confident that we will continue the good work that the Lord has done here in Kailua-Kona.

Sincerely yours in Christ,



Fr. Lio Faletoi

YOU WILL BE RECEIVING A PLEDGE CARD IN THE MAIL SOON. PLEASE USE THE CARD TO MAKE YOUR COMMITMENTS. YOU MAY ALSO PICK ONE UP AT THE PARISH OFFICE. FOR MORE INFO ON OUR PARISH CENTER PROJECT, CONTINUE READING ALL THE EXCITING DETAILS ON PAGES 3-4-5.

PARISH CENTER

BUILDING *On Our* FOUNDATION *for the* FUTURE

E HO'OKUMU KĀKOU I KE KĀHUA NO KĒIA MUA AKU

OUR MISSION

The building of our Parish Center will help our parish community better live out our mission here at St. Michael's. With our continued growth, our need for a place to gather is apparent now more than ever. We are responding to this need by building our Parish Center. This center will allow us to more effectively live out our call to discipleship through stewardship. The impact this gathering space will have on our community can be summarized into the mission we have here at St. Michael's: *"We are disciples who act justly, love tenderly, and walk humbly with God."*

Act Justly

As we gather in our new building, we will be formed to go out and live as Christ's disciples fulfilling our call to act justly. This center will be a space for formation classes to be held, prayer groups to meet, ministries to plan, and staff to execute their duties. This building will help the formation of our parish community through the space and safety that it provides. Within these walls, we hope to form disciples that will act justly to our brothers and sisters in Christ within our parish and surrounding community with hearts of prayer and service.

Love Tenderly

The Parish Center will be a space where we can gather as one community, deepen our faith lives, and grow in charity. It will allow us to live out our call to love our neighbors tenderly by hosting events for our community. This center will allow us to extend our warm aloha to newcomers in our community in a new way, helping us to welcome others as if Christ Himself.

Walk Humbly with God

Through the guidance of the Spirit of the Lord, we will walk humbly with God as His disciples. We will be equipped to go out into our surrounding community to share the Gospel through evangelization and service. We will live out our call to stewardship, giving our lives to the Lord as we humbly become the hands and feet of Christ.





PARIS

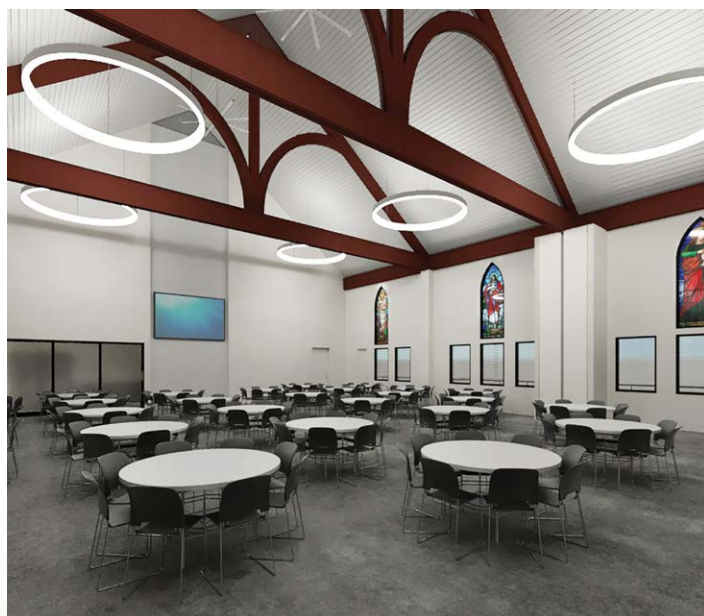
BUI

PARISH CENTER CAMPAIGN OVERVIEW

For more than 40 years, it has been a dream of our parish community to build a Parish Center — a place for our community to grow in faith and gather together. The foundation for our Parish Center was laid during the rebuilding of our church after the earthquake, and now it is time to fulfill this dream and make it a reality. This center has been on our minds and hearts for many years, and now we have begun *Building On Our Foundation for the Future* — *E ho'okumu kākou i ke kāhua no kēia mua aku.*

The Parish Center will be a one-story multi-purpose facility, which will include:

- Accommodation for Approximately 300 People
- Large Gathering Room, Including the Ability to Split it Into Two Separate Rooms
- Warming Kitchen — Including Refrigerator, Stove, Oven and Sink
- Two Handicap Accessible Family Bathrooms
- Modern Audio-Visual Equipment
- Upgraded Security System for the Entire Parish Campus
- Adequate Space for Parish Ministry Meetings, Events, Presentations, and More
- Private Offices for Parish Leaders and Staff



HOW TO SUPPORT OUR PARISH CENTER CAMPAIGN

Make a Five-Year Financial Pledge

We encourage you to consider an ongoing gift over the next five years of this campaign. We are reliant upon you — through your good stewardship as the people of this parish — to raise the \$5.1 million needed for this project. This is our parish, and only through sacrifice can we achieve our goals. We cannot achieve our \$5.1 million goal with one-time gifts, although we thank you in advance for any contribution that you make, from the smallest to the largest. Remember, a pledge to a campaign is not legally binding, but should be made in good faith and with a heart of a faithful steward.



PARISH CENTER

BUILDING *On Our* FOUNDATION *for the* FUTURE

continued from page 3

Methods of Making a Pledge

- Cash, Check, Credit or Debit Card: This is the most common method of making a gift. You can receive a charitable deduction on your tax return as a benefit from this form of gift. When you complete the pledge card, indicate both the method of payment, as well as the timeframe for the payment. There will be payment reminders sent in accordance with the payment schedule you select (monthly, quarterly, semi-annually, annually).
- Automatic Withdrawal: You may make your gift through your financial institution by choosing the amount of gift and the date you would like it deducted from your account. Contact the parish office if interested in this option.
- Property, Life Insurance, or Annuities: We will work with you on ways to give using these resources. Please contact the parish office for more information.
- Stocks and Securities: Stocks, bonds, or mutual fund shares that have appreciated can have an immediate impact on our campaign and also create an income tax deduction for you based on their current value. Since there is no capital gains tax when you make a charitable gift, you receive an additional benefit above and beyond the charitable gift donation. Please contact the parish office for more information.

Remember the Two Facets of Giving

- Offertory: Please do not deduct from your regular contribution to the offertory collection to make a gift towards the campaign. This contribution is just as important now as ever.
- Gifts to the Parish Center Campaign: The commitments and payments to the campaign are in addition to your regular offertory contributions. Gifts to the campaign are restricted to the goals and purposes of this particular campaign.

PARISH CENTER BUILDING SCHEDULE

Started Plan Design and Cost Estimate
March 2019

Finalized Design
April 2019

Submitted Construction Permits
July 2019

Parish Center Groundbreaking
December 2020

Parish Center Construction Complete
TBD

Dedication of Our New Parish Center
TBD

Recognizing Our *Living Stewards*



Congratulations to our Living Stewards for 2020 that received their awards in December. Mahalo nui loa for all that you do for our parish.

MICHELLE "KAULU" AMARAL
CHERYL APPLEBY
CHRISTIAN ARAGON
WALTER BACXA
ALEX & GERALDINE "GERRY" BATA
ELISEO CANCINO VILICAÑA
SERGIO CANCINO GONZALEZ
VICENTE CANCINO VILICAÑA
JAMES "JIM" ECHLE
MARGARET ESSEX
MARTA FINLEY
SUSANA GARCIA
GUADALUPE GARCIA SILVA & FAMILY
JOHN GAWLIK
VALENCIA "NAPUA" KAM
JANICE KERR
ROSALIO LEDESMA
CAROL MACATIAG
CARMINA MACHUCA
JOSE MANUEL MAGAÑA
LUIS MAGAÑA (YOUTH)
PATRICIA NITTA
LUIS ROMAN OBREGÓN LOPEZ
PATRICIA "PAT" PERRINO
ROB ROGOWSKI
CLAUDETTE SERION

CHRIS & JUDY SHIBLEY
LINUS SOHOLMAR & MARY DEPEY
FRANCIS & MARIE TAGOLAYANG
GEORGIANA TSUBOTA
MARY FRANCES VASQUEZ
MARCO ANTONIO VALDOVINOS GARZA
ROBERTO & NOELIA VILLAMIL & FAMILY
ROMANA VILLASENOR





The Anti-Human Trafficking Ministry: *Working to End Modern-Day Enslavement*

It's one of those things that you hear about in the news, but often makes you feel helpless, when it comes to knowing how to make a difference. Human trafficking — it's a tragedy and vicious affront to the dignity of the human person, on every level. And unfortunately, it seems that the circumstances of the pandemic are only making it worse.

“One of the impacts of this COVID-19 pandemic is stress and depression and violence in families,” says Shirley David, who leads the Anti-Human Trafficking Ministry at the parish. “Sex traffickers prey on youth who are looking for someone who can get them out of a stressful situation. Social media makes it all too easy to get involved in unsafe situations.”

Here at St. Michael the Archangel, our Anti-Human Trafficking Ministry serves to help make people aware of the issue and empower them to make a difference in ending it.

“The purpose of this ministry is to live our faith by caring for the vulnerable, and alert others to human trafficking on Hawai'i Island,” Shirley says. “Nobody should be enslaved.”

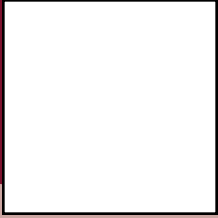
An important aspect of this effort is the Way of the Cross Prayer Group, a gathering of people devoted to praying the Stations of the Cross for an end to human trafficking. The group gathers every Wednesday at noon, to pray before the Blessed Sacrament in Eucharistic Adoration at St. Michael's. Ministry coordinator Karen Unger encourages her fellow parishioners to consider joining the group for prayer.

“We pray for an end to Human Trafficking and for purity of heart,” Karen says. “Unfortunately, human trafficking is a multi-billion-dollar industry. These victims become ‘exploited goods’ which deprives them of their personal rights, freedom of speech, and self-respect.

“There is power in prayer,” she adds. “It doesn't take a lot of time, and the prayers are beautiful.”

continued on back cover





St. Michael the Archangel Parish

75-5769 Alii Drive
Kailua-Kona, HI 96740



The Anti-Human Trafficking Ministry *continued from page 7*

In addition to participating in the Way of the Cross Prayer Ministry, parishioners are invited to attend the Hawai'i Island Coalition to End Human Trafficking on the fourth Thursday of the month, from 12 p.m. until 1:30 p.m., currently meeting via Zoom. Parishioners are also encouraged to sign up for the Anti-Human Trafficking email list to be informed about upcoming training opportunities and other activities.

"I hope that those who have the power to identify and stop human trafficking step up and step in," Shirley says. "I hope that more people learn to identify trafficking and step in to report it and that there is a safe shelter on our island with counselors where trafficked individuals can live and heal."

Here on the island, we can often feel insulated from these types of injustices — however, unfortunately, events such as the Iron Man World Championships are hot spots for human trafficking.

"I think that living on an island gives people a false sense of security — that there is no way human trafficking can happen here," Karen says.

Shirley encourages parishioners to consider how they might become involved in helping to end the evil of human trafficking.

"Join the ministry to learn more," Shirley says. "Add your voice and prayers to end human trafficking on our island."

If you would like more information about the Anti-Human Trafficking Ministry or the Way of the Cross Prayer Ministry, please contact Karen Unger at 808-989-8963, or Shirley David at 808 756-1633.

Mass Schedule

Saturday Vigil: 5 p.m. • Sunday: 7 a.m., 9 a.m., 1 p.m. and 4 p.m. (English), 11 a.m. and 6 p.m. (Spanish)

Daily: Mon-Sat 7 a.m. • Mon-Tues-Thurs-Fri 5 p.m. • Confessions: Saturday 9 a.m. • Adoration: Wednesdays 7:30 a.m. to 4:45 p.m.