



Established
July 5, 1840

St. Michael the Archangel Parish

We are disciples who act justly, love tenderly, and walk humbly with God.

Churches: † Immaculate Conception-Holualoa † Holy Rosary-Kalaoa † St. Paul's-Kawanui † St. Peter's by-the-Sea-Kahalu'u
St. Michael's Church 75-5769 Alii Drive | Kailua-Kona, HI 96740 | Phone: (808) 326-7771

Email Address: stmichaelarchangel@rcchawaii.org / Office Hours: Monday through Friday | 9am - 4:30pm

WEEKDAY MORNING MASSES: 7am Monday through Saturday at St. Michael the Archangel

WEEKDAY EVENING MASSES: 5pm Mon Tues Thurs Fri (English) & 6pm Wed (Spanish) at Immaculate Conception

Adoration: Wednesday 7:30am - 4:45pm / Confessions: Saturday 9am at St. Michael's Church

WEEKEND MASSES: Sat 4pm, Sun 7am, 9am, 4pm / SPANISH MASS: Sun 12noon

Gift Shop Hours: Sun 7:30am - 11:00am

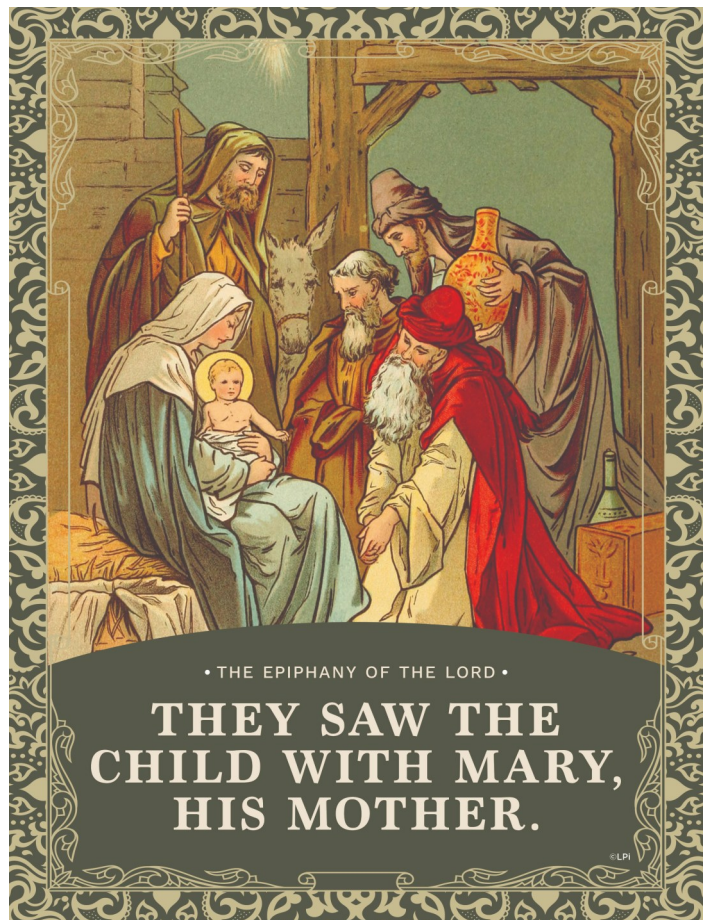
Website: saintmichaelparishkona.org January 4, 2026 | 4 de enero de 2026

The Epiphany of the LORD

Reading I - **Isaiah 60:1-6** | Psalm - **72:1-2,7-9,10-11,12-13** | Reading II - **Ephesians 3:2-3a,5-6** | Gospel - **Matthew 2:1-12**
Primera Lectura - **Isaías 60:1-6** | Salmo - **71:1-2,7-9,10-11,12-13** | Segunda Lectura - **Efesios 3:2-3,5-6** | Evangelio - **Mateo 2:1-12**

THE STAR OF BETHLEHEM

The unfolding of the story of the Incarnation continues today as the Church celebrates the Epiphany. The tale of the magi from the East is one of the most fascinating in all of scripture. It has much to teach us about what we can come to expect, even in circumstances and places that may seem insignificant or small. Bethlehem was a tiny town, what we might refer to today as a town without even one stop light. Yet it is over this seemingly insignificant place that the guiding star stops in its own search for the place where the Savior would be born. Too often we fail to recognize the fact that the star of Bethlehem comes to rest in our everyday lives, where we can experience God's presence, manifested in ever new ways. Epiphany calls us to shake off our stupor and recognize the One who comes to save us. - Copyright © J. S. Paluch Co.



PRAYER TO ST. MICHAEL THE ARCHANGEL

St. Michael the Archangel, defend us in battle.

Be our protection against the wickedness and snares of the devil. May God rebuke him, we humbly pray, and do you, O Prince of the heavenly hosts, by the power of God, cast into hell Satan and all evil spirits, who prowl about the world seeking the ruin of souls. Amen.

Prepare for Next Week's Scripture Readings

1st Reading/Primera Lectura: Isaiah (Isaías) 42:1-4,6-7

Psalm/Salmo: 29(28): 1-2,3-4,3,9-10

2nd Reading: Ephesians 3:2-3,5-6

Segunda Lectura: Efesios 3:2-3,5-6

Gospel/Evangelio: Matthew (Mateo) 2:1-12

Aloha! Welcome to Our Parish - We hope you will find our parish community a place where your faith will be nourished. We encourage you to register with the parish. Registration forms are available in the kiosk, or can be completed online at saintmichaelparishkona.org. To our visitors, we pray that you enjoy your stay in Kona and are blessed with safe travels home.

Spiritual Book Club

We invite you to nurture your faith through the exploration of contemporary writers and discussion with others. In past years, topics explored included practical decision making, an explanation of miracles, and the meaning of the Holy Eucharist. We meet from 4 p.m. to 5 p.m. on the third Thursday of the month in the Grace Center. Virtual participation is also available via Zoom. Our book selection for January is Matthew Kelly's The Forgotten Way. Copies are still available. Stop by the Spiritual Book Club table after Mass this weekend.



January 4, 2026
The Epiphany of the Lord
Is 60:1-6 | Eph 3:2-3a, 5-6 | Mt 2:1-12

Written by
THE
FAITHFUL
DISCIPLE

GROW AS A DISCIPLE | PRAY, STUDY, ENGAGE, SERVE

Have you ever had a moment where you've been so joyful that your heart "throbbed and overflowed"? (Is. 60:5) Perhaps this prompt might call to mind moments we have been chosen or noticed, especially when we otherwise felt sidelined or forgotten. (Imagine expecting to be picked last for the team, only to be someone's first choice!) Today's first reading speaks of a moment like that. While the nations of the earth are shrouded in darkness, God shines his light and glory on Jerusalem, and all the nations come streaming to her bearing precious tributes. Similarly, our Gospel speaks about how God chose Bethlehem — a seemingly insignificant town — to be the birthplace of his Son: "And you, Bethlehem, land of Judah, are by no means least among the rulers of Judah; since from you shall come a ruler, who is to shepherd my people." Like Jerusalem and Bethlehem, we, too, have been chosen by God. As we continue our celebration of Christmas, our hearts are filled to overflowing when we recall that by taking on our flesh, God has chosen to make his home with us for all eternity.

INVITATION

One of the best presents we can offer to someone is our presence. Make an effort this week to intentionally spend time with someone who may feel lonely or forgotten, setting aside other tasks to focus entirely on them. The goal is to help them feel special and *chosen* as a way of giving a glimpse of God's love that chooses each of us out of the many. May the gift of your presence help them to remember how very loved they are.

GO EVANGELIZE

PRAYER, INVITATION, WITNESS, ACCOMPANIMENT

Paul reminds us that God has chosen us, not only for ourselves, but for the sake of others: "You have heard of the stewardship of *God's grace that was given to me for your benefit.*" God gives Paul a special revelation to know the mystery of God so he could preach the Gospel to the Gentiles and to all peoples. We who know the joy of having been chosen to be God's beloved sons and daughters have the beautiful task of helping others to know that they, too, are chosen by God. Because of this, evangelization is not simply an item on our spiritual-to-do list; it is a work of joy — the joy of helping others to discover their own "belovedness" as children of God. And of course, this message is for *everyone!*

Life of Stewardship

As our celebration of Christmas continues, today we observe the great feast of The Epiphany of the Lord. The word “epiphany” comes from Greek and means manifestation or appearance. The stewardship way of life is one in which we live in grateful response to God’s countless manifestations in our lives.

Our Gospel passage, from Matthew, has much to teach us about stewardship, through the actions of the magi.

As good stewards, the magi were watching for manifestations of God’s presence in their lives. “We have seen the star at its rising,” they say. Good stewards are keenly aware of the “star” of God’s presence and His gifts in their lives. It is this awareness that fills them with gratitude and the desire to both worship God and share His gifts with others.

The magi, upon seeing the manifestation of God’s presence in their lives, “were overjoyed.” Good stewards, who live with the awareness of God’s presence and gifts to them, simply can’t help but be filled with joy. Not necessarily the fleeting and superficial kind of joy the world promises through wealth or power, but rather the deep, unalterable joy only God can give.

Finally, the magi were so filled with awe upon encountering the newborn Jesus, they prostrated themselves before him and “opened their treasures and offered him gifts.” This is precisely why good stewards generously share their material gifts - as a loving act of worship to an extravagantly loving God.

Let us rejoice in God’s manifestations in our lives and be watchful for the new ways He is calling us to share ourselves and our gifts in gratitude to our King in the year ahead.

- *Stewardship Reflections by Catholic Stewardship Consultants*

Parish News

Charismatic Prayer Group

Weekly meetings resume for the Charismatic Prayer Group on Tuesday, January 6th from 6pm - 7:30pm.

Epiphany Message from Men of Faith

We will resume our fellowship on January 7th, 2026 at 5:30pm in the Grace Parish Center with a New Year’s potluck celebration. Please bring your favorite dish to share as we bring in the New Year with friends and family. Wishing you all a blessed and joyous Christmas Season and a prosperous New Year. Born is Our Savior, Jesus Christ!

St. Michael Statue Brick Garden

We are accepting orders for our next phase, with installation planned for Spring 2026. Order forms and information are available at the coffee station after Mass, from the kiosk or at the Parish Office during the week. There are three sizes of bricks available, each with your choice of engraving. Let your legacy be part of our parish grounds. MAHALO for supporting this meaningful project!

Young Adult Ministry

The Anchor, First Thursdays, 6-7 PM

Location: Grace Parish Center

Join this judgment-free space to strengthen your faith for the real world. We focus on practical ways to live out our Catholic faith and how to have natural, faith-based conversations. Bring your doubts, grow in confidence!

The Compass, Third Thursdays, 6-7 PM

Location: Ola Brew (Kona)

Meet us for casual fellowship! Enjoy a story about the inspirational life of a saint, followed by a low-key discussion. New to the faith or just curious? All young adults are welcome, so bring a friend! Please email Will at willwind1@gmail.com or Becky at rebeccaflasz@gmail.com for more information.

Women of Faith

Weekly meetings resume on Friday, January 9th from 12-1pm in the Grace Parish Center.

Spiritual Book Club

Our monthly meeting will be held on Thursday, January 15 from 4pm to 5pm in the Grace Parish Center. Our book for January is The Forgotten Way by Matthew Kelly. Meeting is available via Zoom.

Baptism Class

The next Baptism class is on **Saturday, January 17** at **8:30am** in the Parish Office Conference room. All parents and godparents are required to attend. To register for the class, please email baptism.stmichaelkona@rcchawaii.org.

Grief Recovery Method Program

If you are still coping with a painful loss in your life, do consider learning what can help you move forward into the New Year . . .

The Grief Recovery Method Program teaches effective actions to help heal a broken heart, whether the loss was recent or in the past. This program includes identifying beliefs about dealing with loss which have been ineffective, which losses continue to affect your life now, and learning the actions that can help. This is **not** a drop-in or “counseling” program, and will involve reading and writing assignments outlined in the *Grief Recovery Handbook – 20th Anniversary Expanded Edition* (book will be provided).

Facilitated by Suzanne Zaw, Certified Grief Recovery Specialist, the 8-week program starts on **Wednesday, January 21, 2026 to March 11, 2026, from 10 am- 12 noon** at St. Michael’s. Call Suzanne to register at (808) 339-7980 (pre-registration is required). There is **no cost for this program**, but a firm commitment to attend all eight sessions is required.

2026 Hawaii Island Homeless Point-In-Time Count

The Homeless Point-in-Time count is a count of sheltered and unsheltered people experiencing homelessness on a single night in January. HOPE Services Hawai‘i needs volunteers for the 2026 Hawai‘i Island HPIT Count on January 26-30. Volunteers must be at least 18 years of age. Participation in a mandatory training session via Zoom is required on Thursday, January 15, 2026, from 1:00PM to 3:00PM. To volunteer email volunteer@hopeserviceshawaii.org.

Faith Formation

Faith Formation (Grades K-5)

Weekly classes resume on Sunday, January 4 from 10:15 to 11:40am in the Grace Parish Center.

Stewardship of Treasure

December 22nd - 28th, 2025

ONLINE GIVING	\$ 7,576.00
SUNDAY OFFERINGS / MAILED-IN OFFERINGS	\$ 14,122.00
GRACE PARISH CENTER CAMPAIGN	\$ 111,526.00
CHRISTMAS	\$ 20,846.00

After our December regular monthly loan payment of \$21,283.15 plus an additional payment of \$70,000.00, our remaining Loan Balance for the Grace Parish Center is **\$567,109.65**. *Mahalo* for your continued generosity!

Offerings can be mailed directly to the parish office; or click on our website's "Online Giving" to share your blessings.

STEWARDSHIP OF OUR TREASURE FOR THE MONTH DECEMBER 2025

MONTHLY DIOCESAN ASSESSMENT: **\$14,082.75**

The Diocesan Assessment covers shared staff and administrative resources from the Diocese supporting every parish. The new "Annual Appeal" assessment starting in January provides funds for collaborative Catholic ministries and services that extend beyond the capacity of any single parish.

Online Giving

St. Michael's Church provides **Online Giving** - a convenient and safe way to make a one-time or recurring donation. Getting started is easy - visit saintmichaelparishkona.org and click our **ONLINE GIVING** tab. Your gift will be securely transferred directly to the parish bank account.

Youth Ministry (Grades 6-12)

Youth Ministry Meeting for parents and students on Sunday, January 11th at 5:15 pm. We will go over community service, safe environment compliance, Big Island Youth Day at St. Joseph in Hilo, Spring Bible Camp at Mauna Kea State Park cabins, Family Faith Formation pilot program, and Sacrament celebrations.

The Epiphany of the LORD

When I was 22, I went on a pilgrimage to Rome for the Jubilee Year of 2000. I was traveling light with just a backpack, one blue shirt and black pants, little money, and no Italian. I had a few close friends and one goal: to reach the Eternal City. Despite the challenges and deprivations, I felt alive in a way I had never known before.

When do you feel most alive? I'd wager it's not when you're most comfortable or surrounded by stuff. Rather, it's when your life is aimed at something great; when you're on a meaningful and challenging journey with good friends.

That's the image the Magi give us in today's Gospel. They set out from the East not with certainty, but with hope. They study the signs, discipline their attention, and journey together, offering the best they have when they find the newborn King.

The Church gives us their story at the start of the year to reawaken something in us. We are not meant to drift. We're meant to journey as pilgrims. The Jubilee Year of 2025 may have ended, but our pilgrimage has not. Like the magi, the closer we get to Christ, the more alive we become.

- Father John Muir, ©LPI

Treasures From Our Tradition

This year, in the United States the celebration of the Epiphany falls on January 4, but the traditional date for the Epiphany is January 6. The date we know as January 6 was established as the solstice in Egypt in 1996 BC, but the Egyptian calendar lost a full day every 128 years. Twenty centuries later the actual solstice had migrated to December 25. People still kept January 6 for the solstice celebration, but December 25, matching nicely with the Roman pagan feast of the Unconquered Sun, launched an extended solstice holiday. By the time of the early church, the whole period of twelve days was celebrated just about everywhere.

Christians began to celebrate Christ as the true light of the world in four themes: the Nativity, the manifestation to the Gentiles, the baptism of the Lord, and the wedding feast at Cana. That was entirely too much for one day to handle. A twelve-day season was ready to be adapted, so Christians borrowed from the pagan calendar for their own season of light. Thus early Christian celebrations of the Christmas season extended from one date for the solstice, December 25, to the older date, January 6. The darkest time in the Northern Hemisphere could now be filled with the Christian observance of the arrival of the Light of the World.

- James Field, Copyright © J. S. Paluch Co.

"Epiphany Carol" by Thomas Merton

Flocks feed by darkness with a noise of whispers,
In the dry grass of pastures,
And lull the solemn night with their weak bells.
The little towns upon the rocky hills
Look down as meek as children;
Because they have seen come this holy time.
God's glory, now, is kindled gentler than candlelight
Under the rafters of a barn:
Eternal Peace is sleeping in the hay,
And Wisdom's born in secret in a straw-roofed stable.
And O! Make holy music in the stars, you happy angels,
You shepherds, gather on the hill.
Look up, you timid flocks, where the three kings
Are coming through the wintry trees;
While we unnumbered children of the wicked centuries
Come after with our penances and prayers,
And lay them down in the sweet-smelling hay
Beside the wise men's golden jars.

Everyday Stewardship - Penances and Prayers

When I was younger, I wrote music to and recorded Thomas Merton's poem, "Epiphany Carol." Merton's words are profound and paint a picture of the awesomeness of Jesus, the newborn King of Kings, lying in a simple straw bed. The shepherds and Wise Men are drawn to pay homage to the One who has been born above all others and brings with him hope for a broken world.

As Merton correctly points out, the gifts we are called to bring to this baby and lay at his feet are our prayers and penances, next to those gifts of worldly wealth. What is it that you have to bring to the stable on this feast of

YOU ARE INVITED

(schedule may change without advance notice)

MONDAY

- Friendly Place Lunches 10:30am-12pm
- Knights of Columbus 5:45pm
(2nd Monday of the month)
- Church Cleaning 6:00pm

TUESDAY

- Coffee with the Priests 7:30-9:00am
- Charismatic Prayer Group 6:00-7:30pm

WEDNESDAY

- Adoration 7:30-5:00pm
- Kupuna Ministry 8:30-10:30am
- Benediction/Evening Prayer 5:00pm
- Hula Ministry Practice 5:30-6:30pm
- Men of Faith 5:30-6:30pm
- Neocatechumenal Way 6:00-7:00pm
(Last Wed. of each month) 7:00-8:00pm

THURSDAY

- Spiritual Book Club 4:00-5:30pm
(3rd Thursday of each month)
- Young Adults Group 6:00-7:00pm
(First Thursday - Grace Parish Center)
(Third Thursday - Ola Brew)

FRIDAY

- Women of Faith 12:00-1:00pm

SATURDAY

- Church Cleaning 7:30am
- Grounds Maintenance 7:30am
- Confession 9-10am

SUNDAY

- Gift Shop Open 7:30am-12pm
- Children's Rosary Group After 9am Mass
(Last Sunday of each month)
- Immigration Seminar 1:00-2:00pm
(Last Sunday of each month)
- Consecration to God the Father 3:00pm
(1st Sunday of each month)
- Order of Christian Initiation of Adults After 9am Mass

Baptism

Baptism Classes are held monthly as needed. Parents and Godparents must attend class. To register, please email baptism.stmichaekona@rcchawaii.org

Marriage

Please notify the office and allow six months before the date of marriage for preparation.

the Epiphany of the Lord? Unless those prayers and penances lead to a new way of living, our gifts will be void of meaning. What we lay before him speaks to the change in us that he has given to us by his birth. Our daily stewardship is resembled in those gifts. If we are to truly echo the kingdom of God in our lives and actions, what we ultimately offer to him is no less than our entire selves. This baby will give his entire self for us, and his work must continue through our hands and feet.

-Tracy Earl Welliver, MTS © LPi

Recognize God in Your Ordinary Moments - The Stars We Follow

Everyone follows a star. It is human nature to seek. If we are rich, we want to be richer. If we are smart, we want to be smarter. If we are powerful, we want to be more powerful. We cannot stay in one place, so to speak - to say, "I am what I am, I have what I have, and it is enough." Even the very act of maintaining a status quo, be it health or wealth or spiritual goodness, requires action. It requires effort. It requires movement. This is human nature. There is nothing wrong with it. When we stop seeking, we die.

But what are we looking for? Where are we going? I often wonder if the Magi knew what they were seeking - really, truly knew. They were seeking "the newborn king of the Jews," yes, but did they understand who he was? What he was? I don't see how they could have. They were wise men, but they were not prophets. They simply knew this was an endeavor they had to undertake. They knew it in their souls.

There really is very little that we know for certain about the Magi. We don't know how many of them there were. We don't know their religion. We don't know where they came from. All we know for certain is that they listened to a voice they heard deep within themselves. And, heeding that voice, they went forth. And what did they find? They found what we all seek, even if, foolishly, we seek it in riches or power. They found the face of the Child.

So tell me this. Of all the stars you could follow, which one does the voice - that one deep within you - tell you to chase? Point to it. And go forth. - Colleen Jurkiwicz Dorman © LPi

LIVE THE LITURGY - INSPIRATION FOR THE WEEK

The journey of the Magi reflects how treacherous our Christian life on earth can be. Always, evil works against us - Satan lays traps. He sows confusion. May we, like the Magi, recognize the will of God as our guiding star. - ©LPi

Mass Intentions

SATURDAY, JANUARY 3RD

- 4pm - Repose of the Soul of Sheila Leyva, Rest in Peace

SUNDAY, JANUARY 4TH

THE EPIPHANY OF THE LORD

- 7am - Scott & Traci Appleby, Wedding Anniversary Blessings
- 9am - Ken Lienhardt, Rest in Peace
- 4pm - Joan Donnellan, Birthday Blessings

MONDAY, JANUARY 5TH

- 7am - Anthony U. Grande, Birthday Blessings
- 5pm - Kimo & Lisa Duarte for Comfort and Peace

TUESDAY, JANUARY 6TH

- 7am - Judith Ashley, Rest in peace
- 5pm - Renee Ota for Healing

WEDNESDAY, JANUARY 7TH

- 7am - Joe Reynolds, 1st Anniversary of Death, Rest in Peace

THURSDAY, JANUARY 8TH

- 7am - MISSA PRO POPULO
- 5pm - Soki Gonzales, Rest in Peace

FRIDAY, JANUARY 9TH

- 7am - Judith Ashley, Rest in Peace
- 5pm - Sharon Moriarty, Rest in Peace

SATURDAY, JANUARY 10TH

- 7am - Inoh Choe, Joy Choe, Jong Lee, Special Intention

Requesting a Mass Intention

A Mass intention can be scheduled by calling the Office at **808-326-7771**.

Mass cards are available.

"For I was hungry, and you gave Me something to eat..."

—Matthew 25:35

The Food Pantry Ministry

The Food Pantry is open the 2nd and 4th Saturdays of the month from 9 - 9:45am at Immaculate Conception Church Parking Lot.



Use this QR Code for our Amazon Wishlist. Items purchased can be mailed directly to the Parish Office.



Mahalo for your support!

It Seemed Irrational

This Week's Readings at Mass

- ▶ Isaiah 60:1-6 • Glory of the new Zion
- ▶ Ephesians 3:2-3a, 5-6 • Commission to preach God's plan
- ▶ Matthew 2:1-12 • The visit of the magi

The story of the magi following the star to Bethlehem to find the baby Jesus is one of the most heartwarming parts of the Christmas story. The Greek word for the foreign visitors is best translated "magi" although in popular understanding they are sometimes called the "Three Kings" or the "Three Wise Men." Whoever they were, they are an example to us of great courage and trust. They willingly left their home countries to travel for an unknown distance in search of a newborn child they knew nothing about. They packed expensive gifts (a dangerous/courageous act when traveling overland in those days) and met with the most powerful man in the country, King Herod, on their quest to find the baby.

When they found the baby in an unassuming little town in an ordinary family, their hearts told them they were in the right place and they were overjoyed. The humble surroundings didn't stop them from worshiping the little child and then offering their lavish gifts to him. After that, they dared to listen to their dreams and defy the King, thereby protecting the vulnerable child. Probably none of what they did seemed rational to those around them, but because they followed an inner guidance, we still celebrate their journey today.

Questions of the Week

1 Do you know someone who has done something to follow his/her heart which

© Jean Denton flock.pastoralcenter.com

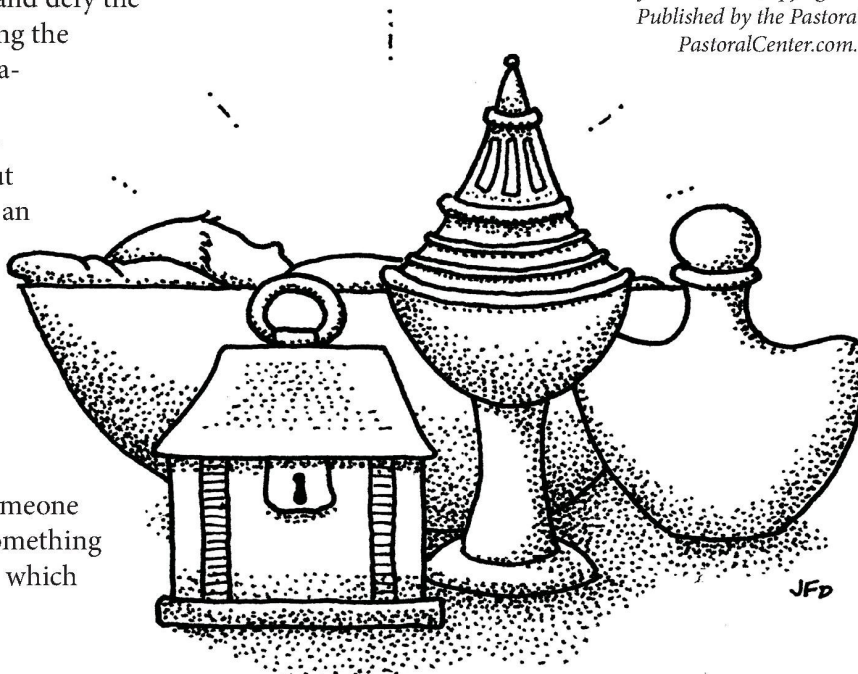
"They were overjoyed at seeing the star... they opened their treasures and offered him gifts."

Sheepish Question:
Instead of wishing, how can I put my faith in Jesus—the true light of the world—into action?

seemed completely irrational at the time but turned out for good? Please share.

2 When have you followed your intuition/inner guidance/Holy Spirit even though it went against cultural or family norms? How did it bear fruit?

*Word of the Week • Copyright © Ann Naffziger.
Published by the Pastoral Center /
PastoralCenter.com. All rights reserved.*



REV. KONELIO FALETOI
Pastor and Vicar Forane of the
West Hawaii Vicariate

REV. CLAUDIO AGUIRRE
Parochial Vicar

**DEACON SÁNDOR
HERNÁNDEZ MORALES**
MEALI'INANI DUARTE-HERNÁNDEZ
Deacon / Pastoral Associate
shernandez@rcchawaii.org

**DEACON CRAIG CAMELLO
PAMELA CAMELLO**
Deacon / Pastoral Associate
ccamello@rcchawaii.org

CYRIL JAIRUS (CJ) ALTARES
Seminararian

EDWINA FUJIMOTO
Youth Minister
efujimoto@rcchawaii.org

MARGARET ESSEX
Children's Faith Formation K-5
messex@rcchawaii.org

CHERYL APPELEY
Baptism Ministry
baptism.stmichaekona@rcchawaii.org

SHIRLEY DAVID
Pastoral Council Chair

DAVE BATEMAN
Finance Council Chair

SHARMAYNE NAONE
Stewardship Committee Chair
& Safe Environment

DON DAVID
Capital Campaign Committee Chair

TJ MOSES
Parish Life Coordinator

WALTER BACXA
Music Ministry

MIGUEL SALAZAR
Spanish Music Ministry

CAROLINE SMITH / LOUELLA BRANCO
Funeral Ministry

PAULETTE ADAMS
Wedding Coordinator

MAYRA RAMIREZ
Spanish Wedding & Quinceañera Coordinator

BILL CULHANE
Food Pantry Ministry

THELMA BACXA
Community Outreach Ministry

SUSAN KEEN
Business Manager
skeen@rcchawaii.org

JANICE LACRO
Administrative Assistant
stmichaearchangel@rcchawaii.org



Catholic Answers

TO EXPLAIN & DEFEND THE FAITH®

Visit Catholic.com.




Donna Whitmyer RB, Principal Broker
donna@hawaii50realty.com
808.937.1510



Hawaii 5 0 Realty

73-4976 Kamanu St. #103 Kailua-Kona HI 96740
www.hawaii50realty.com

St. Michael's KNIGHTS OF COLUMBUS COUNCIL 13227



**MEETS ON THE 2ND MONDAY
OF EACH MONTH
5:45PM - ST MICHAEL'S**

Real Estate

I am honored and blessed to have helped families buy or sell their home in Hawaii. Please allow me to help you with your real estate needs.



Lovette Liantos

Broker-in-Charge, RB-21663
(808) 938-3910
Lovette@GonnaLove-It.com



Colleen Porter Aesthetics & VIPersonal Services
Advanced Skin Care Services with Knowledge & Experience for all Skin Types



Colleen Porter
Medical Aesthetician

(808) 640-7203
portercolleen77@gmail.com
Voted Best of West Hawaii ~14 years



LIV

PREGNANCY AND
WOMEN'S WELLNESS
KONA | HILO | OCEAN VIEW

Pregnant and need help?
Free pregnancy and women's health services
808-326-1766

Want to help?
Donate or Adopt A Family at LIVwellwomen.com

Hualālai Crater Hike Experience

www.uluhao.com



Culture - Forest - Birds

Exclusive private access with cultural guide through the high slopes of Hualālai Volcano



FINANCE FACTORS

SAVINGS - CDS - MORTGAGES



Craig Camello
VP, Loan Officer
NMLS #493134

www.FinanceFactors.com/CraigC
CraigC@FinanceFactors.com

P: (808) 522-5581
M: (808) 936-9886

Home Loans for Hawaii's people 

Keolani Keawe

REAL ESTATE BROKER



Kou Hale Realty LLC

Keolani@KouHaleRealty.com
www.KouHaleRealtyllc.com
808.896.5034

78-6831 Ali'i Dr. Unit 203 Ste E-234 Kailua Kona HI 96740

ISLAND AIR, LLC



General Building Maintenance & Repair/Appliances
Air Conditioning & Refrigeration

Jarry Regpala
Tel: (808) 430 - 3772
Email: islandairllc20@gmail.com




Clarke & Associates, LLC

CERTIFIED PUBLIC ACCOUNTANTS

Knowledgeable, Dependable and Responsive

75-240 Nani Kailua Dr., Suite 5 | Kailua-Kona, HI 96740



Please help promote the cause of Brother Joseph Dutton for Veneration.

Is Your Child Behind in School?

Expert Tutor
Reading Writing, & Math
Professionally Trained
Highly Experienced
References
Sliding Scale

Betty Ross 808-319-5923
Bettydr40@yahoo.com

Loving and Eternal Father,
You chose Brother Joseph Dutton as
An ardent apostle of Your Divine Compassion.
I humbly ask you, through the intercession of
Brother Joseph Dutton, that You will
grant me this favor - - -
Brother Joseph Dutton, please pray for me.
I will be forever thankful if you present my
request to God through Christ our Lord. Amen.

Kona's longest-running Fitness Center

Fitness - Spa - Wellness
Since 1988

808.326.2582

Try us out at

www.theclubkona.com



THE CLUB KONA
FITNESS • SPA • WELLNESS



SOIL PLUS

"Grow with Us"

- Custom Soil Blends
- Mac Nut Husk & Compost
- Red & Black Cinder
- Landscape Rock & More!

Pick Up at our Yard
OR
Schedule a Delivery!

808-326-9645

FREE QUOTE

Learn more at SoilPlusKona.com

BEFORE YOU DECIDE

Would you like to MEET your unborn BABY?

Get a Free ultrasound,
No questions asked,
Total privacy.

Call Mary Warren 808-895-8703



ALI'I GAS

SERVICING YOUR PROPANE NEEDS!
BOTH RESIDENTIAL & COMMERCIAL
(808)329-5150
www.aliigas.com



808-327-1474

Auto Body, Inc.



Plant Finding
Services
We Deliver!

www.SunriseNurseryKona.com
Email: sunrisenurseryllc@yahoo.com

808-640-9191

Find us on Facebook



Free Diagnosis
No Fix - No Fee

PC & MAC
Networking
Security Cameras

Open 9am to 6pm • 7 Days a Week
www.808Computers.com

Above Home Depot • Next to Pink Mocha Cafe
Hale Ku'i Plaza • 73-4976 Kamanu St. #103
Kailua Kona, HI 96740 • 808.331.1808

WINDOW SCREEN/REPAIR



Re-Screens • Security Screen Doors
New Screens • Entry Screen Doors
Sliding Screen Doors

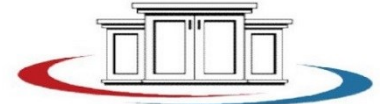
The Window Screen Specialists

DELIVERY AVAILABLE

Open Mon-Fri 8:00 to 5:00

329-7160

74-5615 Luhia St. #B-2 • Corner of Luhia and Eho St.

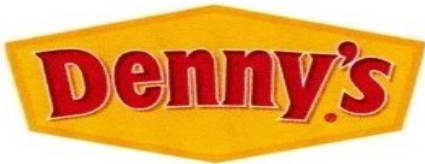


KONA CABINETRY LLC

808-895-1379

KonaCabinetryLLC.com

24+ Years Experience Free In Home Consultations



Locally Owned and Operated
Every Friday is Happy Aloha Friday!
1pm to 6pm 20% off / Mahalo for your
business!

Honoring all deceased veterans

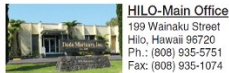


DODO MORTUARY, INC.
& CREMATORY

ESTABLISHED 1898

In your time of need...

The Oldest and Largest Mortuary on the Big Island Serving All Faiths
with Dignity & Integrity Celebrating over 100 years of Excellence



HILO - Main Office
199 Wainaku Street
Hilo, Hawaii 96720
Ph.: (808) 935-5751
Fax: (808) 935-1074



Kona Branch
79-7591 Mamalaha Hwy.
P.O. Box 2109
Kailua-Kona, Hawaii 96750
Ph.: (808) 322-9592
Fax: (808) 322-2996

www.dodomortuary.com

KONA HA

100% KONA COFFEE

Steve & Stephanie Baerg
owners | farmers | roasters

konahacoffee.com
konahacoffee@gmail.com

10% off with discount code: StMichaels



The Golden Tree

Landscaping Services

Eli Cisneros V.

(808) 345-6477 or (808)345-2784

Kona European Auto Repair

We speak your car's language

74-555 Honokohau St Ste A7
Kailua Kona, HI 96740
(808) 731-6139

KONAEUROPEAN@GMAIL.COM
WWW.KONAEUROPEAN.COM



EyelandEyeDOC

Your Kama'āina Eye Care Choice!

Full Service Eye Clinics & Optical Boutiques

www.EyelandEyeDoc.com

Hilo 933.4777

Pāhoa 966.4777 *hablamos español*

KONA 326.4777



Kona Coast Marine

Parts • Sales • Service



808.329.7690

Honokohau Harbor



The
Gutterman
Kona INC.
LI, C-30714

Roofs Too!
CLEANING • REPAIR • INSTALLATION

Bronwyn Denis

937-1523
322-2156 Fax

P.O. Box 350
Holualoa, HI 96725